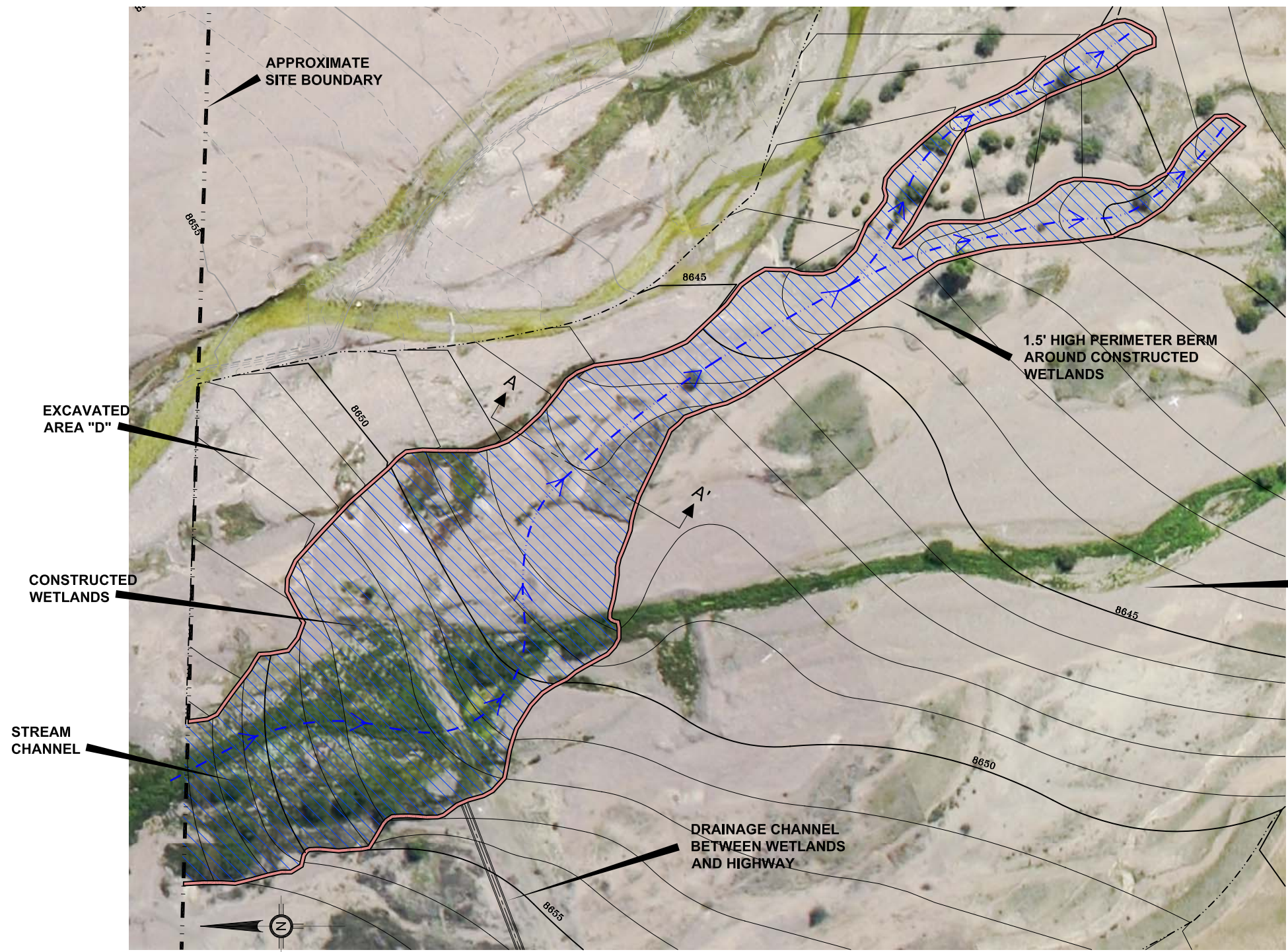


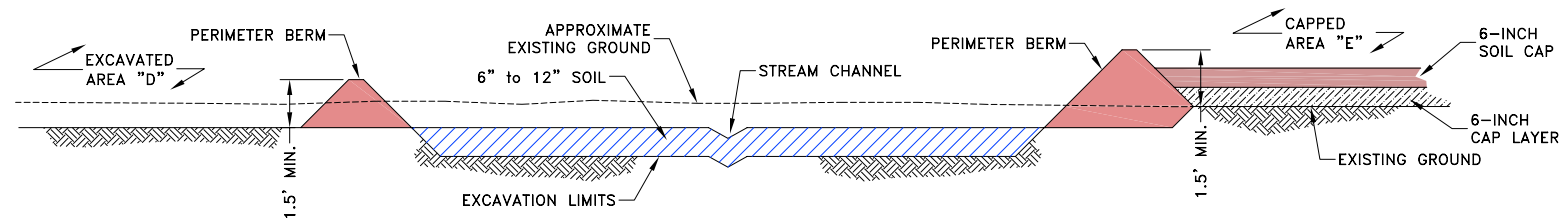
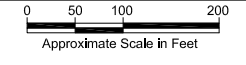
MGB - C:\CADD\PROJECTS\AAS-INC\FINAL-REGRADED\SHEETS.dwg - Mon, 11 Jun 2007



- LEGEND**
- 8650 APPROXIMATE REGRADED INDEX CONTOUR (5-ft INTERVAL)
 - APPROXIMATE REGRADED INTERMEDIATE CONTOUR (1-ft. INTERVAL)
 - EXISTING INDEX CONTOUR (10-ft. INTERVAL)
 - EXISTING INTERMEDIATE CONTOUR (2-ft. INTERVAL)
 - APPROXIMATE LIMITS OF CONSTRUCTED WETLANDS
 - STREAM CHANNEL AND FLOW DIRECTION

- NOTES:**
- 1) TOPOGRAPHY AND PROPERTY BOUNDARY BASED ON TOPOGRAPHIC SURVEY OF THE MINERAL COUNTY FAIRGROUNDS SITE, BY DAVIS ENGINEERING SERVICES INC., DATED 05/26/05.
 - 2) AERIAL IMAGE USED FOR REFERENCE ONLY.

PLAN OF CONSTRUCTED WETLANDS



SECTION A-A'
TYPICAL SECTION OF CONSTRUCTED WETLANDS
(NOT TO SCALE)

TITLE
**MINERAL COUNTY FAIRGROUNDS
VCUP ACTION**

**CONSTRUCTED WETLANDS
PLAN AND SECTION**

NO.	DESCRIPTION	BY	DATE	DESIGNED	DATE
REVISIONS					

Prepared By American Geological Services, Inc. 3222 S. Vance Street, Suite 100 Lakewood, Colorado 80227 For Mineral County Fairgrounds Association Creede, Colorado	DRAWING No. 140	SHEET 5 of 6	REVISION
SCALE AS SHOWN			